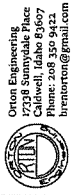


**ROYAL RIDGE
SUBDIVISION**



Oregon Engineering
12218 Sunnyvale Place
Portland, Oregon 97227
Caldwell, Idaho 83697
Phone: 503 350 9433
brinton@ograind.com



Skinner
Land Survey
Precision Land Surveyors, P.C.
1411 South 5th Street
Portland, Oregon 97202
(503) 454-8923
www.skinnerlandsurvey.com



**PRELIMINARY
SEWER & WATER
UTILITY
PLAN**

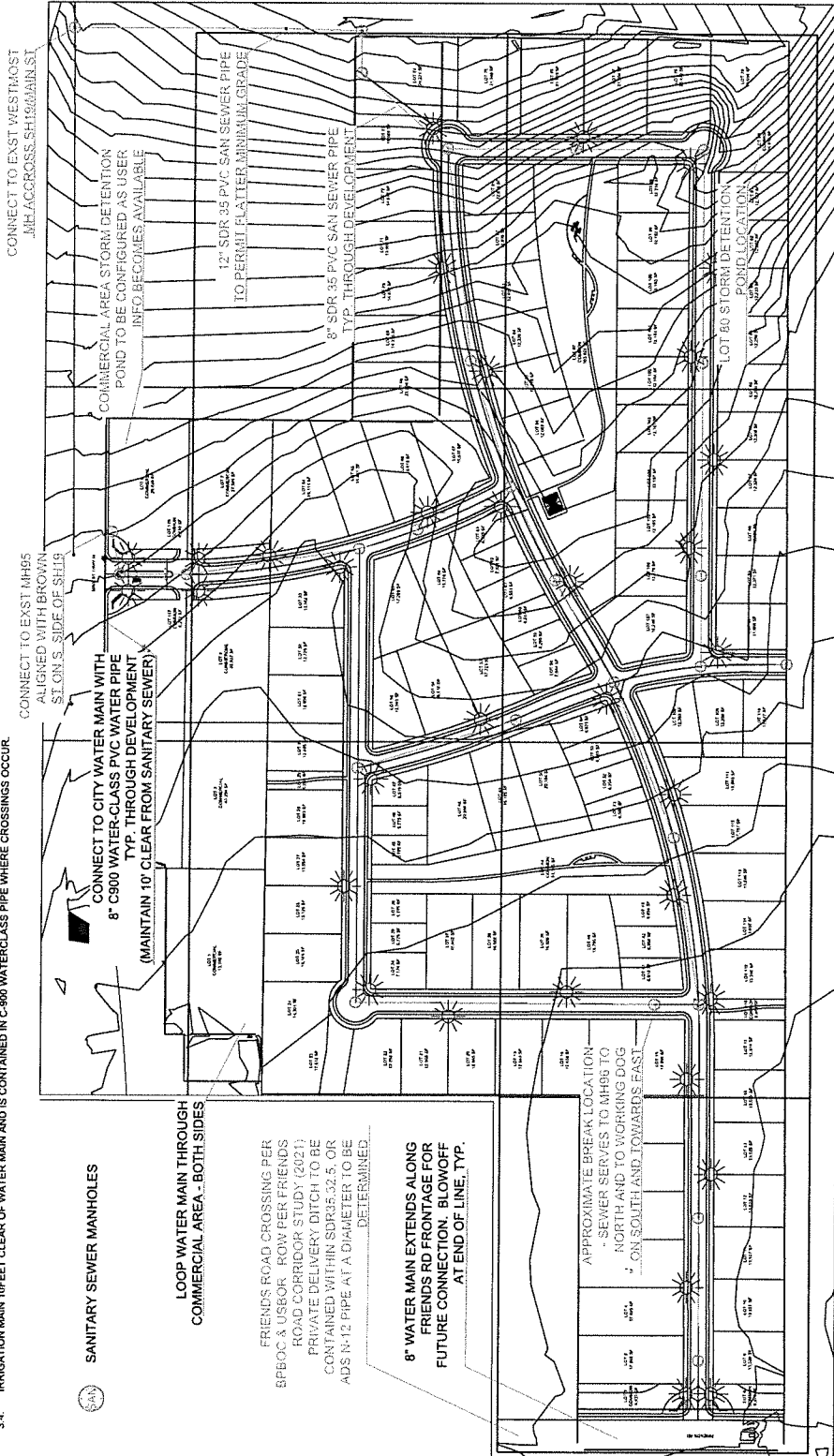
No.	Revision/Date	Date

Royal Pro-C Development
21246B Nobus Road
Greeneleaf, Idaho 83526-8940

Royal Ridge Subdivision
A Royal Pro-C Development
Greeneleaf, Idaho

2003-114-Cnt1
10/9/2021
C-101
Sheet
1" = 200'

- NOTES:**
1. SANITARY SEWER:
 - 1.1. SEWER ALIGNMENTS ARE CRITICAL. DESIGN SLOPES MUST BE MAINTAINED TO FACILITATE CONNECTIVITY FOR DEVELOPMENT
 - 1.2. SEWER IS SDR 35 POLYVINYL CHLORIDE (PVC) SEWER PIPE. SEWER MUST TRANSITION TO C900 WATERCLASS PIPE AT WATER MAIN OR FROM SEWER MAINLINE APPROACHES WITHIN 10 FEET OF WATER MAIN. MAINTAIN 10' WATER-SEWER CLEAR SEPARATION EXCEPT AT PUMP STATIONS AND AT ENGINEER OF RECORD APPROVED LOCATIONS.
 - 1.3. MANHOLES MUST BE AT ROAD GRADE AND COLLARED IN ACCORDANCE WITH THE IDAHO STANDARDS FOR PUBLIC WORKS CONSTRUCTION (ISPWC).
 - 1.4. MAINLINE MAY NOT BE "ROPED" OR DEFLECTED. RUNS BETWEEN MANHOLES
 2. CULINARY WATER
 - 2.1. EXISTING WATER MAINS ALONG SH19 FRONTAGE USING A TAPPING SADDLE OR TEE WITH REPAIR COUPLER. COORDINATE WITH PUBLIC WORKS DEPARTMENT FOR CONNECTION AND TO MANAGE SERVICE OUTAGES.
 - 2.2. WATER MAIN IS 8" DIAMETER C-900 WATERCLASS PVC PIPE.
 - 2.3. WATER MAIN BLOWOFFS OR FIRE HYDRANTS MUST BE INSTALLED AT ALL DEAD ENDS (AS IN THE FRONTAGE EXTENSION IN FRIENDS ROAD).
 - 2.4. FIRE HYDRANT PLACEMENT TO BE DETERMINED DURING DESIGN WITH ASSISTANCE OF CALDWELL RURAL FIRE.
 - 2.5. CULINARY WATER METER SETTERS MAY BE USED ON COMMON PROPERTY BOUNDARIES TO SERVE TWO LOTS. ALTERNATE SEWER AND WATER SERVICES TO MAINTAIN 10FEET MINIMUM.
 3. IRRIGATION
 - 3.1. IRRIGATION INFRASTRUCTURE MUST BE MAINTAINED IN PLACE OR ALTERED AS NEEDED IN ACCORDANCE WITH IDAHO CODE
 - 3.2. COORDINATE WITH PUBLIC WORKS SUPERVISOR, DOUG EMMICK FOR IRRIGATION IMPACTS.
 - 3.3. IRRIGATION PUMP STATION TO BE LOCATED IN COMMON LOT OR EASEMENT
 - 3.4. IRRIGATION MAIN 10FEET CLEAR OF WATER MAIN AND IS CONTAINED IN C-900 WATERCLASS PIPE WHERE CROSSINGS OCCUR.



CONNECT TO EXISTING WATER MAIN WITH 8" WATER-CLASS PVC PIPE THROUGH DEVELOPMENT TYP. THROUGH DEVELOPMENT (MAINTAIN 10' CLEAR FROM SANITARY SEWER)

CONNECT TO EXISTING MH95 ALIGNED WITH BROWN SH19 S. SIDE OF SH19

CONNECT TO EXISTING WATER MAIN WITH 8" WATER-CLASS PVC PIPE THROUGH DEVELOPMENT TYP. THROUGH DEVELOPMENT (MAINTAIN 10' CLEAR FROM SANITARY SEWER)

SANITARY SEWER MANHOLES

LOOP WATER MAIN THROUGH COMMERCIAL AREA - BOTH SIDES

FRIENDS ROAD CROSSING PER SBPOC & USBOR ROW PER FRIENDS ROAD CORRIDOR STUDY (2021). PRIVATE DELIVERY DITCH TO BE CONTAINED WITHIN SD035-32.5 OR ADS 14-12 PIPE AT A DIAMETER TO BE DETERMINED.

8" WATER MAIN EXTENDS ALONG FRIENDS RD FRONTAGE FOR FUTURE CONNECTION, BLOWOFF AT END OF LINE, TYP.

APPROXIMATE BREAK LOCATION - SEWER SERVES TO MH95 TO NORTH AND TO WORKING DOG ON SOUTH AND TOWARDS EAST.

CONNECT TO EXISTING WESTMOST SH19 ACCESS SH19/60/161/ST

CONNECT TO EXISTING WATER MAIN WITH 8" WATER-CLASS PVC PIPE THROUGH DEVELOPMENT TYP. THROUGH DEVELOPMENT (MAINTAIN 10' CLEAR FROM SANITARY SEWER)

CONNECT TO EXISTING WATER MAIN WITH 8" WATER-CLASS PVC PIPE THROUGH DEVELOPMENT TYP. THROUGH DEVELOPMENT (MAINTAIN 10' CLEAR FROM SANITARY SEWER)

CONNECT TO EXISTING WATER MAIN WITH 8" WATER-CLASS PVC PIPE THROUGH DEVELOPMENT TYP. THROUGH DEVELOPMENT (MAINTAIN 10' CLEAR FROM SANITARY SEWER)